

50/200

A PART OF BOCA RIO, P.U.D.

# REPLAT OF BOCA RIO NORTH

BEING A REPLAT OF TRACTS B, C, E AND H,  
BOCA RIO NORTH AS RECORDED IN PLAT BOOK 50, PAGES 172  
THROUGH 174, INCLUSIVE, BEING IN SECTIONS 29 AND 32,  
TOWNSHIP 47 SOUTH, RANGE 42 EAST, PALM BEACH  
COUNTY, FLORIDA.

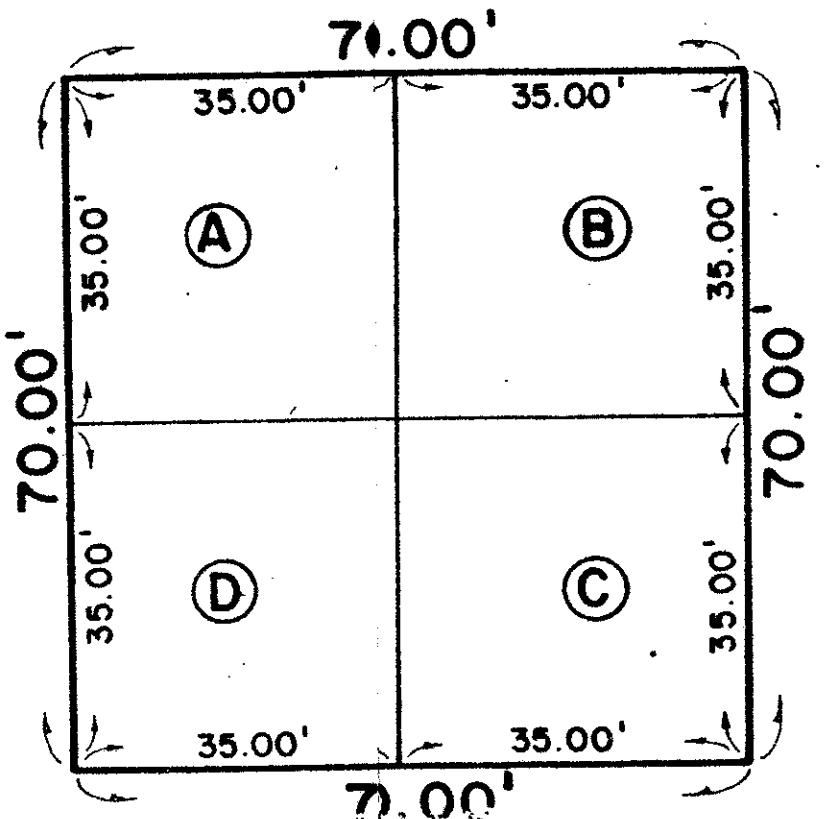
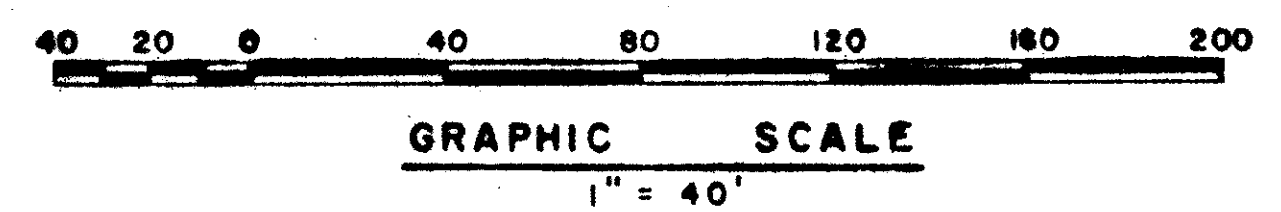
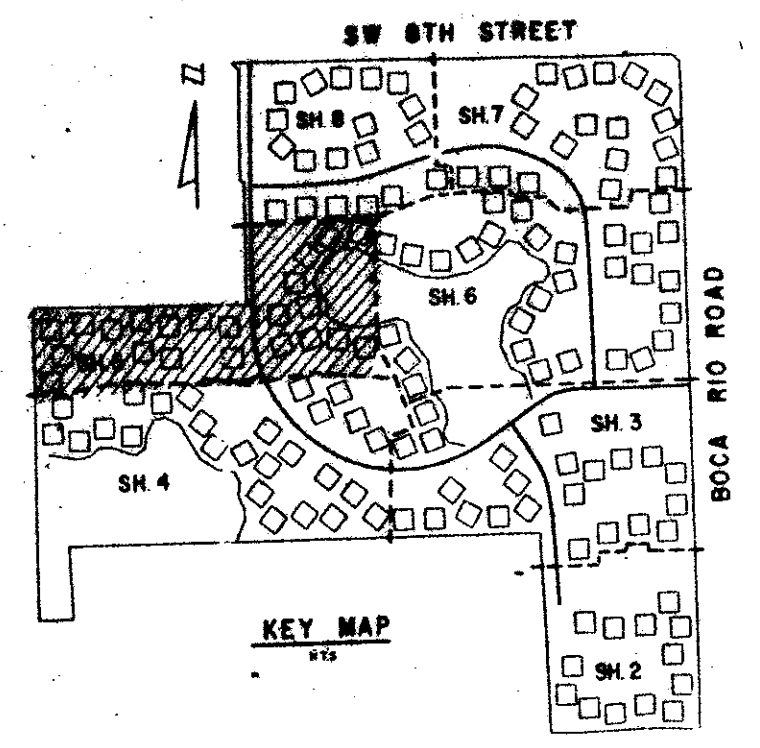
SHEET 5 OF 8

FEBRUARY, 1985

200

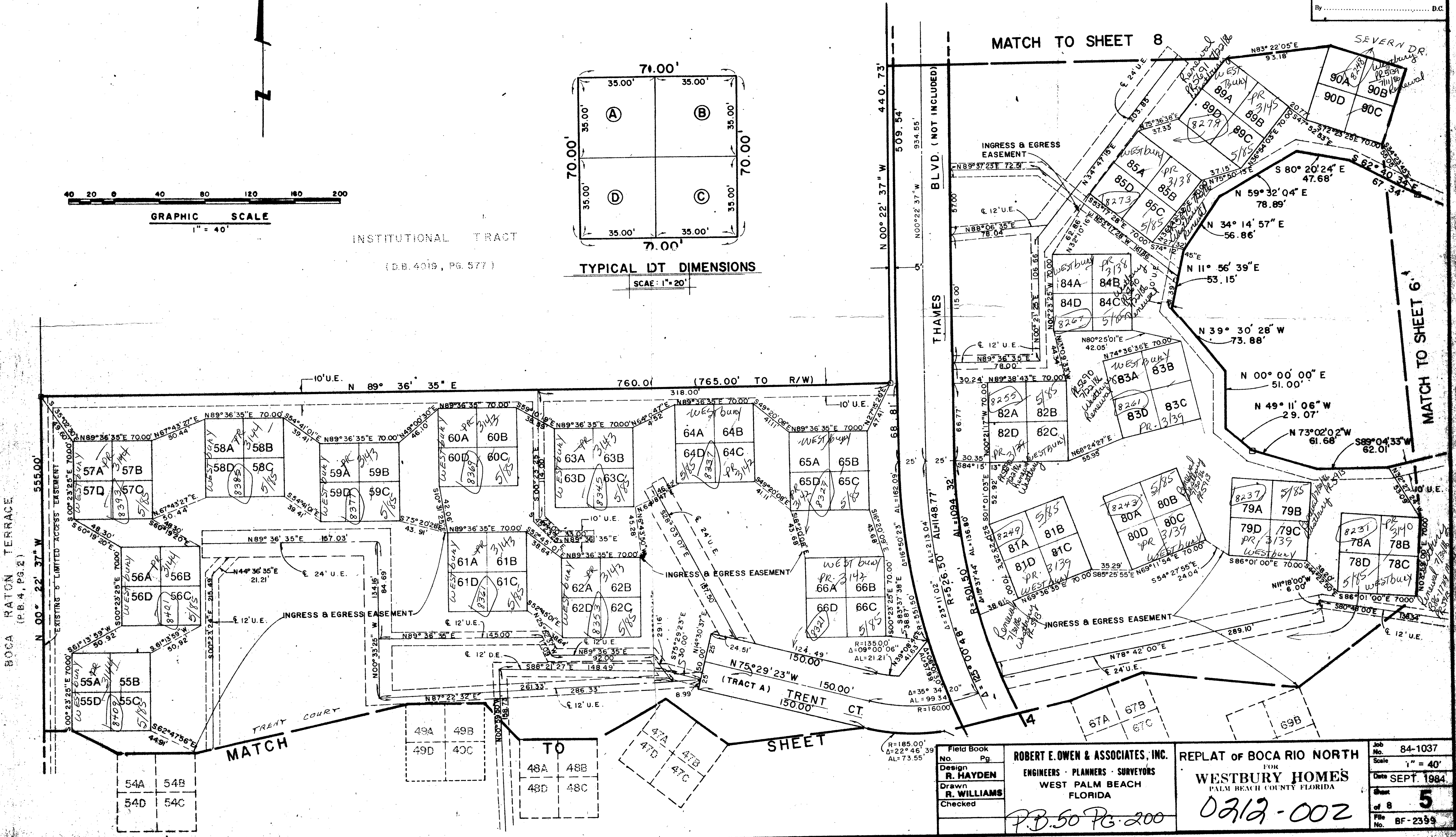
up 5/1/85  
29/4/72  
CONVEYANCE Boca Rio North  
BOOK 50 PAGE 199  
BLOCK 50-1 FLOOD MAP 240B  
ROAD # 54 ZONING RS  
OR YES MAP CODE 33932  
MUD NAME BOCA RIO NORTH

COUNTY OF PALM BEACH  
STATE OF FLORIDA  
This Plat was filed for record at ..... M.  
this ..... day of .....  
19 ..... and duly recorded in Plat Book No. ....  
..... on page .....  
JOHN B. DUNKLE, Clerk, Circuit Court  
By ..... D.C.



INSTITUTIONAL TRACT  
(D.B. 4019, PG. 577)

TYPICAL DT DIMENSIONS  
SCALE: 1" = 20'



MATCH TO SHEET 8

MATCH TO SHEET 6

BLVD (NOT INCLUDED)

THAMES

MATCH

SHEET

Field Book  
No. Pg.  
Design  
**R. HAYDEN**  
Drawn  
**R. WILLIAMS**  
Checked

**ROBERT E. OWEN & ASSOCIATES, INC.**  
ENGINEERS - PLANNERS - SURVEYORS  
WEST PALM BEACH  
FLORIDA

REPLAT OF BOCA RIO NORTH  
FOR  
**WESTBURY HOMES**  
PALM BEACH COUNTY FLORIDA

P.B. 50 PG. 200

0212-002

Job No. 84-1037  
Scale 1" = 40'  
Date SEPT. 1984  
Sheet 5  
of 8  
File No. BF-2359

DRAWING NUMBER

DRAWING NUMBER

DRAWING NUMBER

PLAN HOLD CORPORATION • IRVINE, CALIFORNIA  
RECORDED BY NUMBER 07548